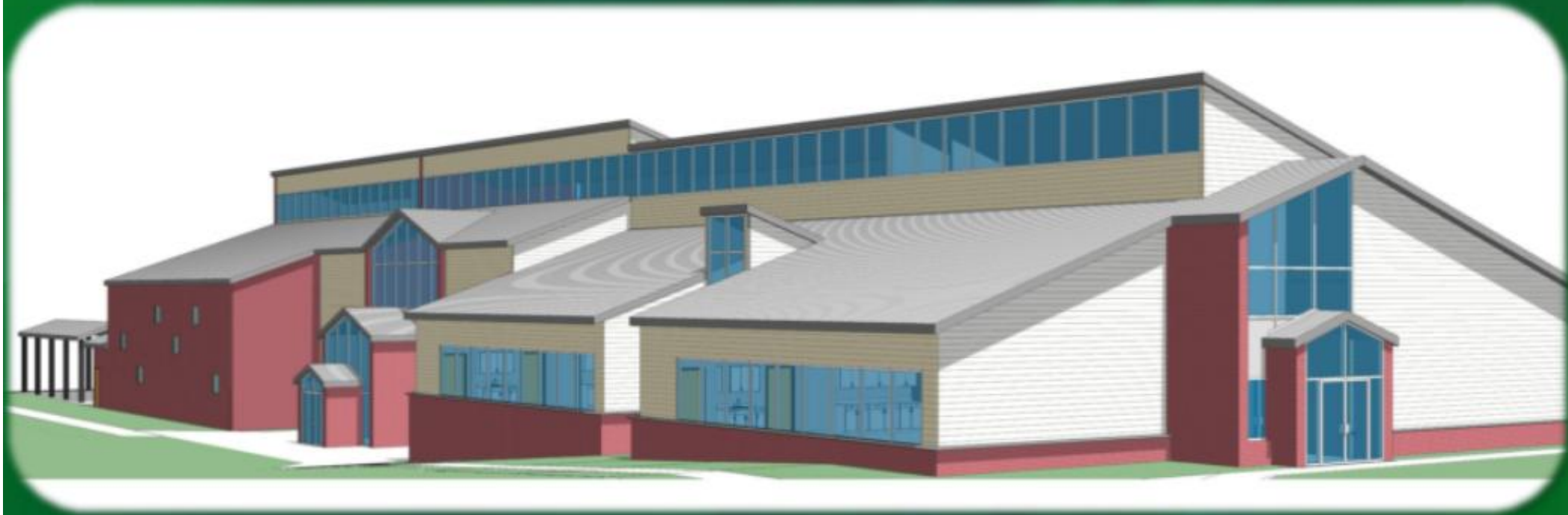


Change for the new Millennium



*Our Vision for the JPC
Multi-Purpose Childcare
& Family Center*

Facilities



- **Multi-purpose gym/dining area**
- **Exercise / fitness center**
- **Computer lab and Media Center. Campus-wide Wi-Fi**
- **Full Teen Center with game room, club rooms and lobby**

8 classrooms

7 offices

2 conference
rooms

Commercial
Kitchen



Continuous Assessment

- *Develop surveys in the areas of Physical, Social, Educational, Mental and Occupational Health to be evaluated for every client.*
 - Easy surveys that give definitive answers with corresponding programming solutions.
 - Clients will be re-evaluated every six months to see if needs are being met.
 - Use survey data to drive future programming.



Mental Health Hub



- *Establish an environment conducive to community's mental health needs*
 - Train staff and families to implement best mental health practices in all interpersonal program and interactions
 - Make mental health diagnoses and evaluations available to entire community
 - Establish an Article Clinic for ongoing mental health treatment and services for all ages

'Fit' for our Community

- *Making a healthier Cornhill with:*
 - A new community fitness center
 - A basketball court and outdoor play areas
 - A robust healthy meal community feeding program
 - Fitness and nutrition education programming throughout



Never too Old *or Young* to Learn



- *Multiple educational and occupational opportunities*
 - Community access to computer lab and media center
 - Job “tools” lab for the disabled & a robust library
 - Community skills workshops and job searches
 - Pre-K and Head Start programs in the works
 - Head, Hand, & Heart Family Enrichment Program for ages 3-5
 - Education focused Youth Center for ages 6-18
 - Non-traditional hours childcare, 2nd & 3rd shift

STIC OUT

Science & Technology Inner-City OUTreach

- *Proposed partnership with SUNY-POLY to develop the workforce of the next century from inside of the city*
 - Develop programming to peak nanotechnology and cyber-security interest and develop skills
 - Afterschool STEM clubs, representing three levels of difficulty (elementary, middle, high school)
 - Develop an Urban Science Fair for Week of Celebration
 - Develop classes for adults with STEM focus
 - Develop STEM-centered designs and themes throughout the building and corresponding programs
 - Offer science and math tutoring and homework help

Exploring funding



- **21st Century Communities**
- **Head Start opportunities**
- **NYS MV Regional Economic Development**
- **Private fundraising**
- **Oneida County DSS Childcare Subsidies**
- **Clinical Fees**
- **Various Corporate, Government, and Private Organization Grant Applications**

JOIN Positive Change!



26 Johnson Park
P.O. Box 160, Utica, NY 13503-0160
Tel: 315-734-9608 Fax: 315-266-1223
www.johnsonparkcenter.org